

# EQUIPMENT SHEET

**FREEWAY**  
TRAILING SUCTION HOPPER DREDGER



## CONSTRUCTION/CLASSIFICATION

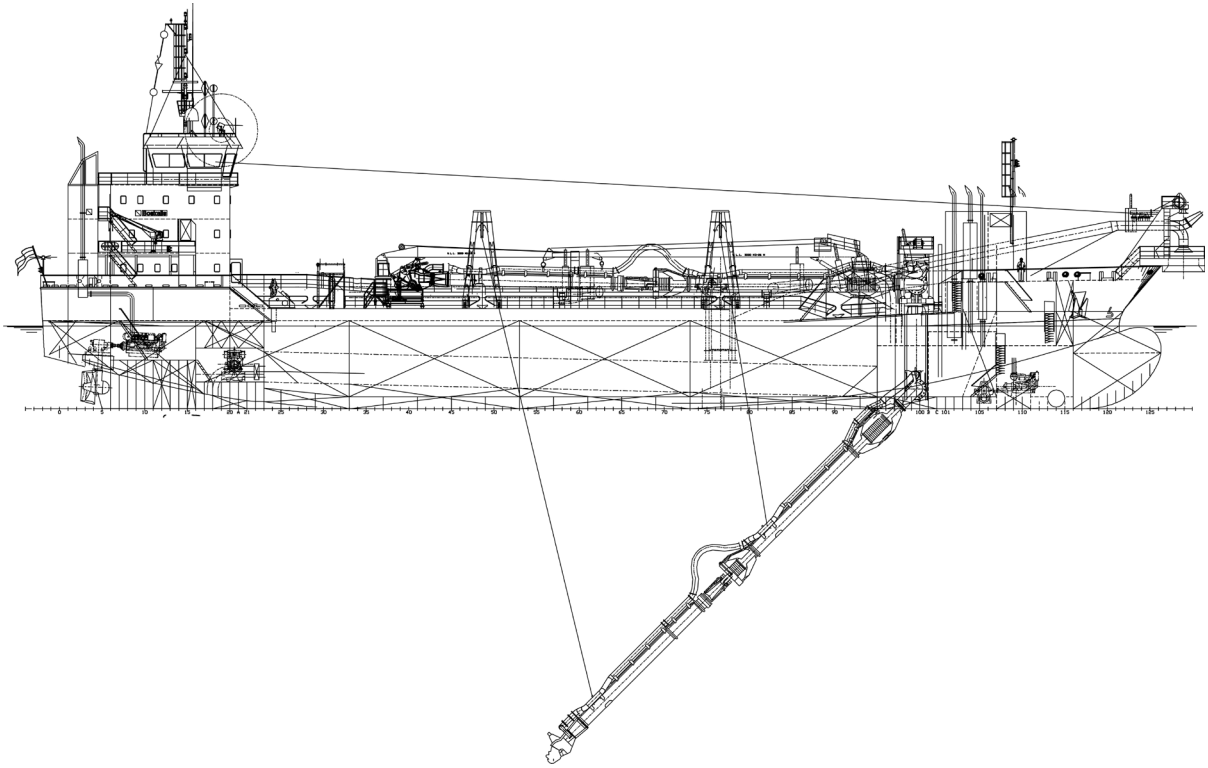
Built by	Shipkits B.V.
Year of construction	2014
Classification	I ✘ HULL ✘ MACH ✘ Hopperdredger. Unrestricted Navigation. Dredging within 15 miles from shore or within 20 miles from port; or dredging over 15 miles from shore with a significant wave height restriction to 2.5 m. ✘ AUT-UMS

## FEATURES

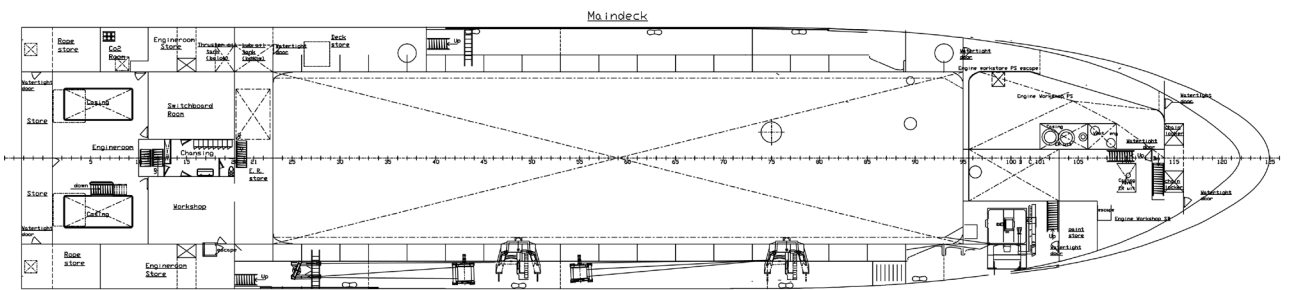
Degassing system installed.
Open bottom doors remain above the flat bottom of the vessel enabling very shallow dumping.
Highly manoeuvrable using rudder propellers.
Fully computerised engine room with certificate for unattended operation.
Automatic discharge valve can be fitted into the overflow.
Discharging through bottom doors, shore discharge and rainbow nozzle
Fully compliant with the latest international requirements such as modern engines with low emissions.
State of the art technology to minimize environmental impacts.

## MAIN DATA

Gross tonnage	4,320
Length overall	92.10 m
L.p.p.	84.87 m
Breadth	19,00 m
Moulded depth	7.25 m
Max. draught Int. load line	5,93 m/ DWT 5392
Max. draught dredging	6,82 m/ DWT 6750
Hopper capacity	4,500 m <sup>3</sup>
Suction pipe diameter	900 mm
Max. dredging depth	30 m
Sailing speed loaded	11 kn
Total installed power	9,472 kW
Sand pump output	1,825 kW
Jet pump output	2*746 kW
Pump ashore output	3,650 kW
Propulsion power sailing	2*1,491 kW
Bow thruster	500 kW



**SIDE VIEW**



**TOP VIEW DECK LEVEL**