

# EQUIPMENT SHEET

**FRIGG & RIND**  
HOPPER AND TRANSPORTATION BARGES



## CONSTRUCTION/CLASSIFICATION

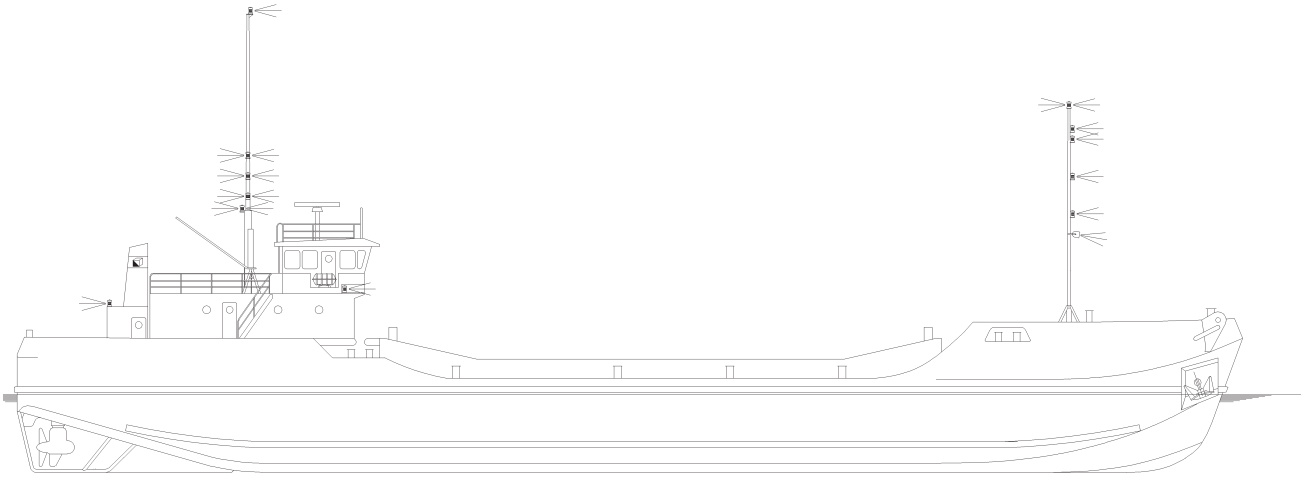
Built by	Deggendorf - Germany
Year of construction	1975
Classification	B.V. Hopper dredger - Unrestricted navigation Dredging within 15 miles from shore, or 20 miles from port.

## FEATURES

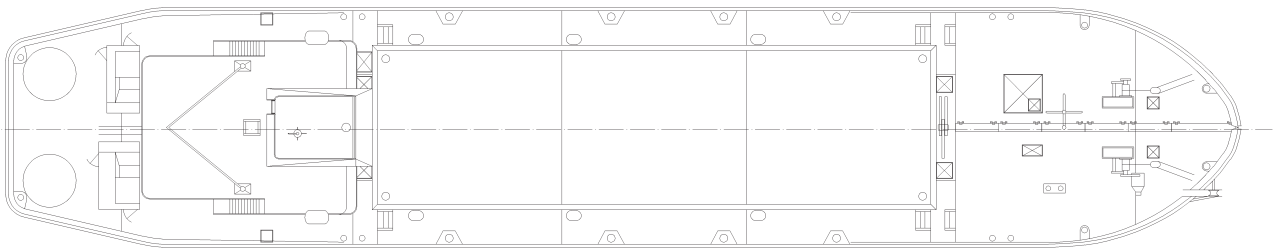
2 pcs Aquamaster units for propulsion.

## MAIN DATA

Gross tonnage	974
Length overall	60 m
Moulded breadth	11.4 m
Moulded depth	4.5 m
Draught empty	2.2 m
Draught loaded	3.8 m
Carrying capacity (D.W.)	1,247 t
Hopper capacity	750 m <sup>3</sup>
Discharge System	Split hopper (bottom doors/ pump ashore/rainbow)
Sailing speed loaded	7 kn
Total installed power	1,030 kW
Propulsion power sailing	900 kW
Bow thruster	None



**SIDE VIEW**



**TOP VIEW DECK LEVEL**