

EQUIPMENT SHEET

SOSPAN DAU
TRAILING SUCTION HOPPER DREDGER

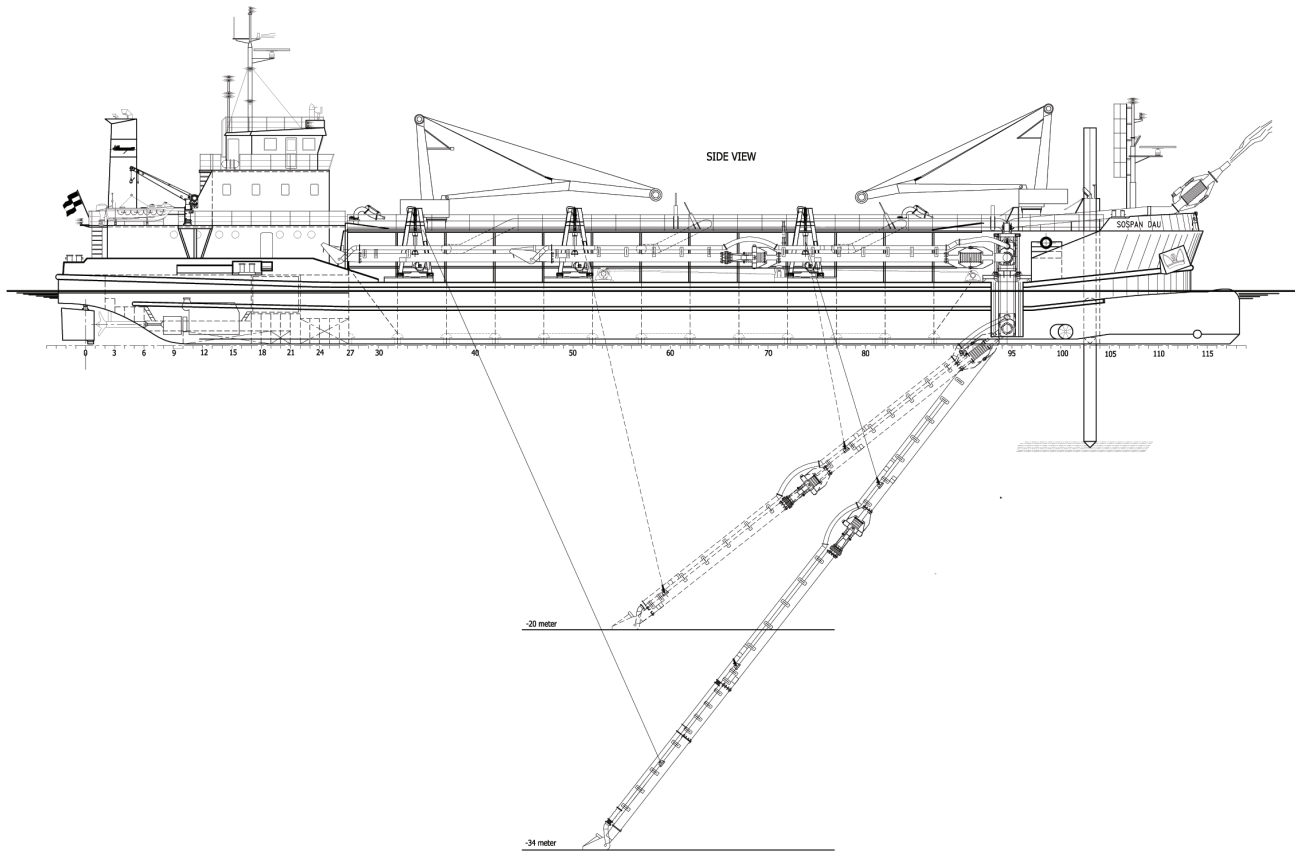


CONSTRUCTION/CLASSIFICATION

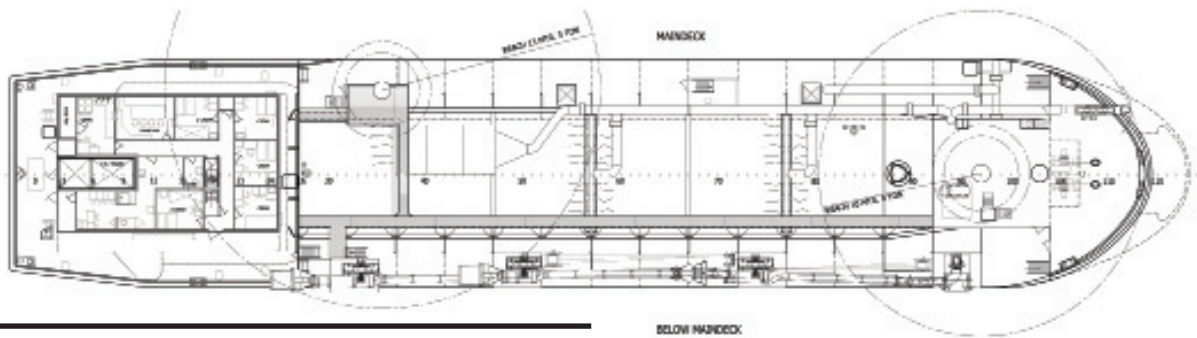
Built by	Atelières et Chantiers de la Manche
Year of construction	1978
Year of modification	2001 / 2012
Classification	I 3/3 hopper barge coastal waters – deep sea occasionally

MAIN DATA

Gross tonnage	1,546
Length overall	72.80 m
Breadth	14.30 m
Moulded depth	3.80 m
Min. draught empty	1.80 m
Max. draught Int. load line	2.80 m
Max. draught dredging load line	3.30 m
Carrying capacity (D.W.)	1,850 t
Hopper capacity	1,500 m ³
Suction pipe diameter	0.50 m
Max. dredging depth	32.00 m
Discharge systems	6 bottom doors/pump ashore/ rainbow installation
Sailing speed loaded	8.0 k
Total installed power	3,200 kW
Sand pump output	1,000 kW
Jet pump output	450 kW
Pump ashore output	1,000 kW
Propulsion power sailing	2 x 600 kW
Bow thruster	300 kW



SIDE VIEW



TOP VIEW DECK LEVEL

