

EQUIPMENT SHEET

SHOALWAY
TRAILING SUCTION HOPPER DREDGER



CONSTRUCTION/CLASSIFICATION

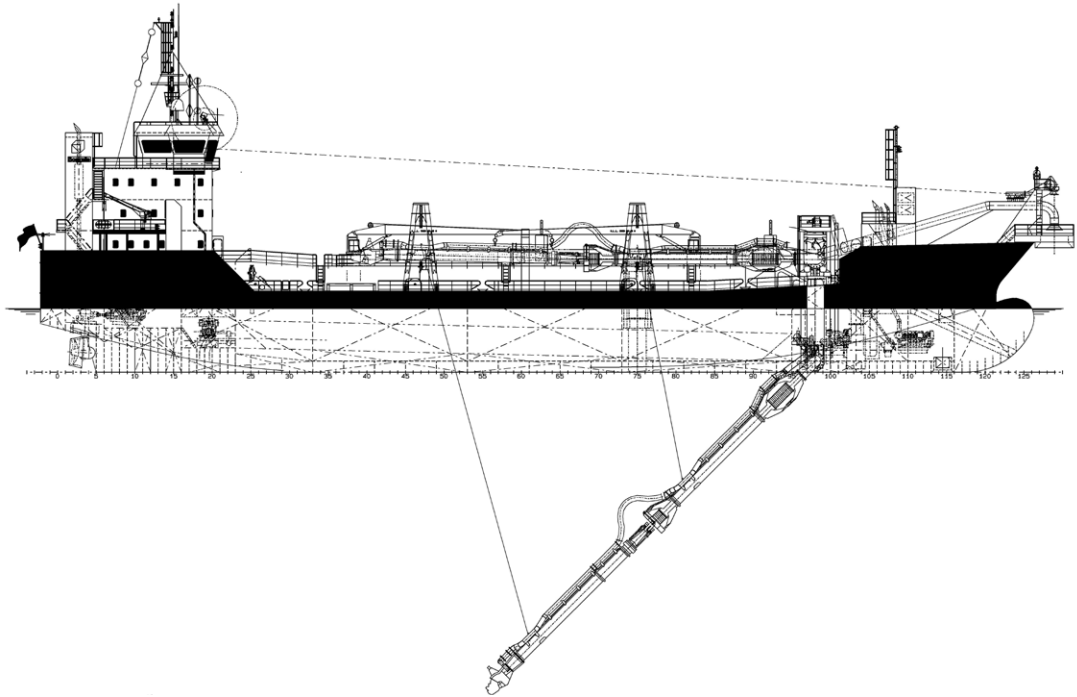
Built by	Intervak scheepswerf & constructie b.v. Harlingen
Year of construction	2010
Classification	I ✘ HULL ✘ MACH ✘ Hopperdredger. Unrestricted Navigation. Dredging within 15 miles from shore or within 20 miles from port; or dredging over 15 miles from shore with a significant wave height restriction to 2.5 m. ✘ AUT-UMS

FEATURES

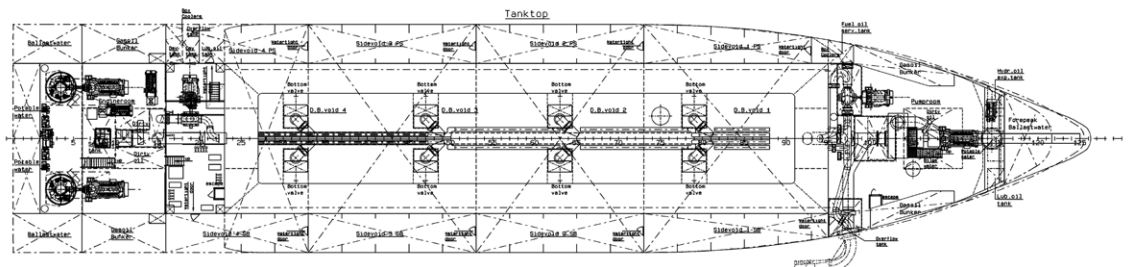
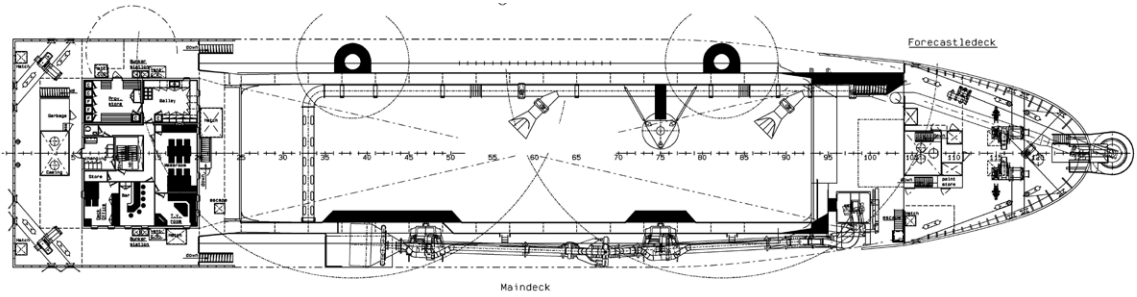
Shallow draft.
Degassing system installed.
Open bottom doors remain above the flat bottom of the vessel enabling very shallow dumping.
Highly manoeuvrable using rudder propellers.
Fully computerised engine room with certificate for unattended operation.
Automatic discharge valve can be fitted into the overflow.
Dumping through bottom doors, shore discharge and bow bulb.
Fully compliant with the latest international requirements such as modern engines with low emissions.
Oil pollution prevention equipment, and approved anti fouling paint.
State of the art technology to minimise environmental impacts.

MAIN DATA

Length overall	90.00 m
L.p.p.	83.09 m
Breadth	19,00 m
Moulded depth	7.25 m
Max. draught Int. load line	5,93 m/ DWT 5392
Max. draught dredging	6,82 m/ DWT 6750
Hopper capacity	4,500 m ³
Suction pipe diameter	900 mm
Max. dredging depth	30 m
Sailing speed loaded	11 kn
Total installed power	6,666 kW
Sand pump output	1,680 kW
Jet pump output	2*746 kW
Pump ashore output	1,680 kW
Propulsion power sailing	2*1,491 kW
Bow thruster	500 kW



SIDE VIEW



TOP VIEW DECK LEVEL

Royal Boskalis Westminster N.V.
PO Box 43
3350 AA Papendrecht
The Netherlands
T +31 78 69 69 000
F +31 78 69 69 555
royal@boskalis.com
www.boskalis.com